

UC94-OBF front mount cylinder

download

Request access codes
for our customers only
Operator manual (reserved)
Certificates



UC94-OBF - Balanced: the number of turns lock-to-lock is equal port to starboard or vice-versa.
Adjustable boss style fittings for easy installation
High resistance stainless steel connection bolt (ULTRABOLT)

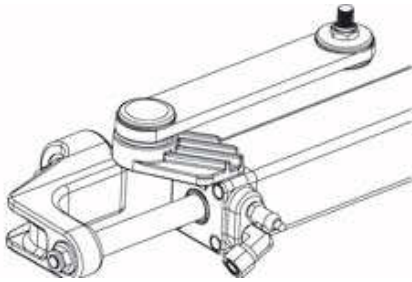
INNOVATIVE NEW DESIGN (PATENTED):

Split cylinder mounting rod for easy installation and bushings to prevent friction with engine tilt tube.

Depending on the applications on the outboard engines, the UC94-OBF cylinder is available in 2 versions:

UC94-OBF/1 - 40154 F

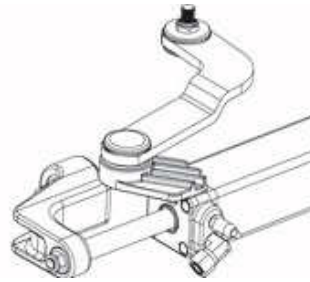
UC94-OBF/3 - 40161 C



SPECIFICATONS

- Volume
- Output force
- Inside diameter
- Stroke
- 3/8" (9.5 mm) Fittings
- Bleed fittings

UC94-OBF Applications

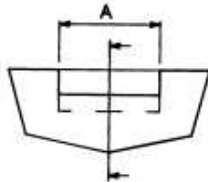
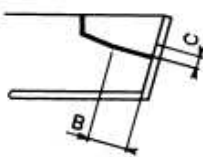


UC94-OBF/1 -/3

- 94 cc - 5.7 cu. in
- 278 kg - 613 lbs
- 30 mm - 1.18"
- 186 mm - 7.3"
- For high pressure flex hose
- DN5 Quick connect

Dimensions

SPLASHWELL DIMENSION REQUIREMENTS



Engine No.	A	B	C
1	540 mm - 21.25"	152 mm - 5.98"	152 mm - 5.98"
2	1110 mm - 43.70"	152 mm - 5.98"	152 mm - 5.98"

For twin engine applications, the minimum distance between the two engine centers is 21.6" (550 mm).